

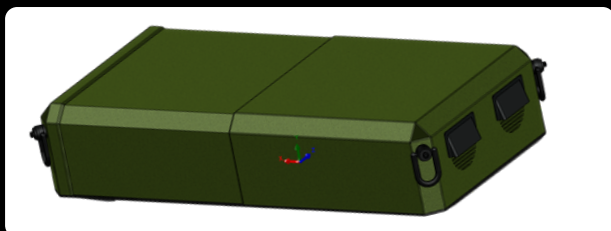
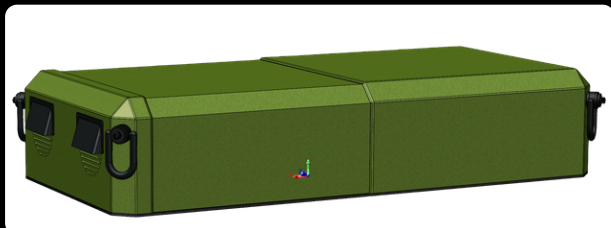
Ralar[®]1 (R1)

PRODUCT SPECIFICATIONS - MILITARY

Physical

Total Weight: 250lbs

Size (LxWxH): 1456mm x 756mm x 330mm



Electrical

Input Power Requirements for trickle and/or recharge

- DC 12V - 48V / 10A Max
- AC 110V - 240V / 5A Max

Internal Battery: 36V nominal with 50.4 Ah

Battery Alone Run time: 12 Hours

Communications

Wired: Ethernet

Wireless: Doodle Radio – MilSpec 1.625 – 2.5 GHz, 256 AES Encryption

Wifi 2.4 - 5.8GHz, AES 256 Encryption

Starlink: dependent on model, Encryption

Network Accessible Data

- GPS location of Ralar
- GPS location of UAVs
- Speed of Ralar
- Speed of UAVs
- Video feed from UAVs
- Ralar charge percentage
- Drone charge percentage
- Estimated remaining system run time
- Estimated remaining UAVs run time
- Estimated remaining UAV charge time

BUY NOW >>

Inquiries:

kmcgrath@targetarm-hq.com, (203) 470-7304

www.targetarm.com